

RISKY BUSINESS

MEMBER EDITION



FOX
BUSINESS

A GAMMA IOTA SIGMA NEWSLETTER
TEMPLE UNIVERSITY'S DEPARTMENT OF RISK, INSURANCE,
AND HEALTHCARE MANAGEMENT

SIGMA
CHAPTER

Volume IX, Issue 2

<http://www.temple.edu/gis>

Phone: 215.204.9368

February 2, 2004

H. WAYNE SNIDER DISTINGUISHED GUEST LECTURER SERIES

Glenn A. Spencer, ARM

Executive Vice President – Managing Partner, Northeast Region

Palmer & Cay

Wednesday, February 4, 2004

11:40 to 12:30

Tuttleman 101

Mr. Spencer joined Palmer & Cay in 2003, responsible for their risk management consulting, employee benefits consulting and insurance brokerage operations in the Northeast Region. Prior to joining Palmer & Cay, Glenn was a Managing Director and Chief Operating Officer for Marsh USA's Washington & Baltimore Operations. In total, Mr. Spencer spent 11 years with Marsh (and its predecessor companies) in various client management and operational roles. During this time, he worked with numerous Fortune 500 and middle market clients in developing risk management and employee benefits programs and strategies. He also has extensive experience in structuring and placing complex insurance transactions. He has worked with companies across a broad array of industries including technology, telecommunications, public entity, construction, hospitality and financial institutions.

In addition to Glenn's experience with Marsh, he spent 3 years as a commercial underwriter with the Travelers and was the Vice President of Risk Management for America Online. As a risk manager, he lead numerous strategic initiatives including the development of one the broadest integrated risk programs ever placed, the development of a comprehensive business continuity planning effort and the development of a total absence management program.

Glenn holds a BBA in Finance from George Washington University and the Associate in Risk Management designation. In addition, he is a member of the American Management Association's (AMA) Risk Management & Insurance Advisory Council, is a member of American International Group's Broker Advisory Committee and is a Risk Management/Insurance instructor for the AMA.

Professional Exams Passed

Gerard Hoffner—CEBS 1, 3, 4

Carol Chung—CEBS 1

Dan Montgomery—CPCU 520

Jonathan Allen—CPCU 551

Julie Smith—CPCU 557

Marcin Plonka—CPCU 520

Jiang Cheng—SOA/CAS 1, 2

Scott Archie—SOA/CAS 1

Dan Dotzert—SOA/CAS 1

Bing Qu—SOA/CAS 1

HEY! LOOK HERE! STUFF'S GOING ON!!

Committee Meetings – 2/2, Monday

Consult your Spring 2004 Handbook for locations
11:40 to 12:30

New Member Orientation – 2/6, Friday

Curtis 201
11:40 to 12:30

Gamma Games – 2/11, Wednesday

Pearson Hall, Gym 145
6:00 to 8:00

For more info contact Joe Pizza: jpizza@temple.edu



THE FOX SCHOOL
of Business and Management

TEMPLE UNIVERSITY

GAMMA GAMES!!

The long awaited day is once again rapidly approaching... **Gamma Games** will be taking place on **Wednesday, February 11, 2004 starting promptly at 6:00 in Pearson 145**. This list of

games planned includes **fast lemon, blanket volleyball, tug-of-war,** and the ever popular **lightning-fast Gamma Trivia**. All Gamma members choosing to participate will receive a **free t-shirt** commemorating the



evening. There will also be an ample supply of **food and drink** available to replenish all the energy you lose. To top it off, the winners of Gamma Games will live in infamy through a **Champions Plague** to be proudly displayed down the corridors of the Risk Management and Insurance Department. You can sign up on the Gamma Office door, at the weekly meetings, or with you committee chairs. For more information you can contact **Joe Pizza (jpizza@temple.edu)** or **Leticia Trott (ltrott@temple.edu)**. Don't miss this great opportunity to come out and get a wonderful workout with all your Gamma colleagues!!

RISK MGMT INTERN CANDI-

The following two events are exclusively for intern candidates in the field of Risk Management. If you have completed either of these workshops in the past, then it is not necessary to fulfill this obligation again. For more info contact: Julie Smith at jsmith27@temple.edu.

INTERN INTERVIEW WORKSHOP

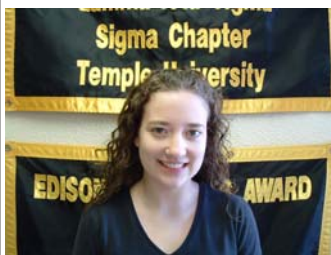
The Sigma Chapter will be holding an **Intern Interview Workshop on Saturday, February 14, 2004**. This workshop is also very important to individuals looking to obtain an internship this upcoming summer in the field of Risk Management and also for students enrolled in BA 100. As another one of the cornerstone steps in the road to the resume book, this workshop will assist you in the proper way to conduct yourself while interviewing for an internship position. It will be held from **9:30 am to 12:30 am**.

MOCK ETIQUETTE WORKSHOP

On **Monday, February 9, 2004** we will be holding a **Mock Etiquette Workshop**. This workshop is very important for individuals looking to obtain an internship for the following summer (exclusively risk management majors). As the other cornerstone step in the road to the resume book, this workshop will assist you in the correct way to eat in a business environment. No longer will you be in wonder as to which fork is the proper fork and whether you should pass the salt and pepper separately or together. So extend your pinkies proudly and come learn the ins and outs of business dining. It will be held from **4:45 pm to 6:30 pm**.

MEET THE OFFICERS

ELIZABETH MELERVEY – Elizabeth is in her maiden voyage as a Gamma officer. Through a collapse of power, she was sucked to the top of the Sigma Chapter ladder. Serving in the capacity of Secretary, our chances to win the Bowers Award ride solely upon



her shoulders. Responsible for writing the monthly report, her decisions will either make or break the organization for the next several semesters. Having a stress free personality, Elizabeth is not letting this immense responsibility phase her. The rest of us are as confident in her capabilities...

NEW MEMBER ORIENTATION

On **Friday, February 6, 2004** the first **New Member Orientation** of the Spring 2004 semester will be held in **Curtis 201 from 11:40 to 12:30**. This orientation is a chance for new members to learn about the organization, the many professional and personal benefits the organization offers its members, and the ways to make the most out of membership. The New Member Orientations are a great way to figure out where and how to carve out a niche in the Sigma Chapter. Pizza will be served!!



Monday	Tuesday	Wednesday	Thursday	Friday
<p>2</p> <p>Committee Meetings 11:40 to 12:30 *Consult your handbook for classroom locations.</p>	<p>3</p>	<p>4</p> <p>Guest Lecturer Glenn Spencer Palmer & Cay 11:40 to 12:30 Tuttleman 101</p>	<p>5</p>	<p>6</p> <p>New Member Orientation 11:40 to 12:30 Curtis 201</p>
<p>9</p> <p>Mock Etiquette Workshop 4:45 to 6:30</p>	<p>10</p>	<p>11</p> <p>Guest Lecturer Michael Reardon Mercer HR Consulting 11:40 to 12:30 Tuttleman 101</p> <p>Gamma Games Pearson 145, 6:00 to 8:00</p>	<p>12</p>	<p>13</p> <p>Internship Presentations 11:40 to 12:30 Curtis 201</p> <p>Saturday, February 14 Intern Interview Workshop 9:30 to 12:30</p>