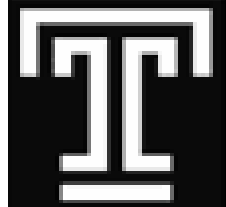




# RISKY BUSINESS

## MEMBER EDITION



**SIGMA  
CHAPTER**

A NEWSLETTER FROM THE SIGMA CHAPTER OF GAMMA IOTA SIGMA  
IN TEMPLE UNIVERSITY'S DEPARTMENT OF RISK, INSURANCE, AND  
HEALTHCARE MANAGEMENT

**FOX  
BUSINESS**

VOLUME XIII, ISSUE 13 [HTTP://WWW.TEMPLE.EDU/GIS](http://www.temple.edu/gis) PHONE: 215.204.9368 APRIL 18, 2005

## 14TH ANNUAL GAMMA IOTA SIGMA DINNER

**APRIL 30TH, 2005, 6:00 PM**

**EMBASSY SUITES**

**PLEASE RSVP BY FRIDAY APRIL 22, 2005**

On **Saturday, April 30th, 2005**, the Sigma Chapter will be hosting its **14th Annual Gamma Iota Sigma Dinner at the Embassy Suites by the Airport**. The hotel is located at 9000 Bartram Avenue. A **cocktail reception** will be held prior to the dinner **beginning at 6:00 p.m.**, and **dinner will begin promptly at 7:00 p.m.**

Following the dinner, the usual ceremonies will be held. At 8:00 p.m., we will begin with our **Guest Speaker**, Pierre Busson (Class of 2000) of Marsh. Following the guest speaker, **the initiation ceremony will be held for all new members of the 2004—2005 academic year**. Members with **Academic Distinction** will also be formally recognized at this time. A number of other recognitions will also be made: the **officers for the 2004—2005 academic year**, the **officers for the 2005—2006 academic year**, the **Outstanding Committee Member Awards**, the **Member of the Year Award**, and the **Senior Officer Award**. To complete the evening, our DJ will be spinning records until midnight, so stick around and shake the night away.

Please RSVP by signing up at the Gamma office. A sign up sheet will be on the door. If you have any questions e-mail **Matt McGurk at [mmgurk@temple.edu](mailto:mmgurk@temple.edu)**.

### **DID YOU KNOW...CURRENT INDUSTRY EVENTS**

#### **COURTESY OF OUR INDUSTRY RELATIONS TEAM**

#### **Maryland Legislature Close to Passing "Pay or Play" Law**

Legislation requiring large employers to spend at least 8% of their payroll on providing health insurance benefits passed the Maryland Senate last week. Under S.B. 790, employers with at least 10,000 employees in the state that failed to meet the requirement would have to contribute to a state fund that provides health care coverage to low-income residents.

The bill, which passed the House last month, is expected to become law because it has the support of enough lawmakers to override Gov. Robert L. Ehrlick Jr.'s likely veto, sources say. The legislation also would require nonprofit employers with 10,000 or more employees to spend at least 6% of their payroll on health benefits.

### **IN THIS ISSUE...**

*Did You Know?...*Current Industry Events

Intern Spotlight—Jon Backlund

Spring Cleaning

### **UPCOMING EVENTS...**

Spring Fling—4/19

Caree Presentations—4/22

Spring Cleaning—4/23

Soup Kitchen—4/24

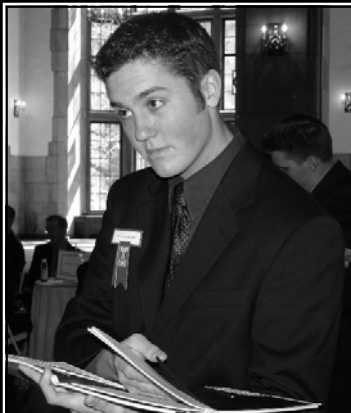
Committee Meetings—4/25

Pam Rogers of Marsh—4/27



**THE FOX SCHOOL**  
of Business and Management

TEMPLE UNIVERSITY



## INTERN SPOTLIGHT JON BACKLUND

Jon Backlund is a Junior Risk Management Major with a minor in Management Information Systems expecting to graduate in May of 2006. Jon has been an active member of the Sigma Chapter since the Spring of 2003 and has served as Vice President of Finance.

Jon's summer internship was with **Philadelphia Insurance**

**Companies** in Bala Cynwyd, PA. He worked in the Account Services Department. Jon spent most of his time supporting the day-to-day functions of the department which primarily included processing premium checks and assisting with account renewals.

Jon valued the open-door environment of the office. He also enjoyed the chance to perfect his office skills...mainly his time spent in front of the paper shredder and copy machine.

Jon suggests that future interns weigh all of their options before selecting which company to intern with. He also recommends being yourself during the interview process.

Jon has previously interned with Milliman USA in Wayne, PA.

*Feel free to email Jon with any questions about his internship at [backlund@temple.edu](mailto:backlund@temple.edu).*

## LAST GUEST LECTURER OF SPRING 2005

Next **Wednesday, April 27th, 2005, Pamela Rogers of Marsh** will be joining us as our last Distinguished Guest Lecturer for Spring 2005. Pam has taken the time to speak to the Sigma



Chapter many times before and she promises to never disappoint. Pam has worked as Director of Risk Management for Target, Sears, and Nestle. She always has interesting stories to share so be sure not to miss this much anticipated presentation!

## SPRING FLING

On **Tuesday April 19th** Gamma Iota Sigma will be participating with the other organizations of Temple and have a table which to fund-raise and promote the Gamma Iota Sigma name. This year we are going with the warm weather theme of selling pet fish. We will have a game set up where you can win fish of different sizes and colors. Along with the fish you can also purchase bowls to keep them in. Make sure to come out and support the table and Gamma! If you have any questions about the event please contact **Matt McGurk at [mmcgurk@temple.edu](mailto:mmcgurk@temple.edu)**.



## SPRING CLEANING

On **Saturday, April 23, 2005**, the Sigma Chapter will be hosting **Spring Cleaning**. The purpose of Spring Cleaning is to unite all student professional organizations

within the Fox School of Business at Temple University to make our surrounding community beautiful. We will be helping out at the Carmella Playground located in North East



Philadelphia. From cleaning up graffiti to fixing benches and painting a new mural (Sigma Chapter Style), this years event certainly looks to be a positive and fun filled experience for all. If you have any questions or concerns, please email **Ori Feibush at [ofeibush@temple.edu](mailto:ofeibush@temple.edu) or Megan Baxter at [mbax@temple.edu](mailto:mbax@temple.edu)**.

Monday	Tuesday	Wednesday	Thursday	Friday	Saturday
18	19	20	21	22	23
	<u>Spring Fling!!!</u>			<u>Career Presentations-</u>	<u>Spring Cleaning—8AM to 2PM</u>
<b>RIMS 2005 Philadelphia</b>				11:40-12:30 in Speakman Hall Rm 113	24
					<u>Soup Kitchen—5:30PM</u>
25	26	27	28	29	30
<u>Committee Meetings—11:40AM to 12:30PM</u>		<u>Pam Rogers of Marsh—11:40AM to 12:30PM in Kiva Auditorium</u>			<u>GIS Annual Dinner—7PM at the Embassy Suites</u>
					1 <u>Soup Kitchen—5:30PM</u>