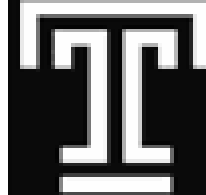




RISKY BUSINESS

MEMBER EDITION



**SIGMA
CHAPTER**

A NEWSLETTER FROM THE SIGMA CHAPTER OF GAMMA IOTA SIGMA
IN TEMPLE UNIVERSITY'S DEPARTMENT OF RISK, INSURANCE, AND
HEALTHCARE MANAGEMENT

**FOX
BUSINESS**

VOLUME X, ISSUE 7

[HTTP://WWW.TEMPLE.EDU/GIS](http://www.temple.edu/gis)

PHONE: 215.204.9368

OCTOBER 11, 2004



JAMES MEATHE
PRESIDENT & CHIEF OPERATING OFFICER
PALMER & CAY
WEDNESDAY, OCTOBER 13TH AT 11:40
WALK AUDITORIUM

Jim Meathe is President and Chief Operating Officer of Palmer & Cay. Most recently, Jim led the Midwest operations for Marsh Inc. In 2000, he was appointed to Marsh's North America Executive Committee which has oversight responsibility for brokerage operations in the United States and Canada. Prior to Marsh, Jim served as a regional president and managing principal with Johnson & Higgins until its merger with Marsh in 1997. In 1994, he attended the Wharton School - Advanced Management Program AICPCU. He has more than 22 years experience in the insurance industry.

Jim currently serves on the boards of Olympic Steel and Boykin Lodging Company, both of which are located in Cleveland, Ohio. Jim has been actively involved in his local communities. In Chicago, he served on the boards at Lake Forest College and Children's Memorial Hospital. While in Cleveland, he served on the Advisory Council at John Carroll University's School of Business and on the boards of Ursuline College, Cleveland Center for Contemporary Art, Catholic Charities Service Corporation and Meridia Hospital. Jim and his wife, Mary, chaired the Boys and Girls Clubs of Cleveland's 1998 fundraising event. For several years, Jim was chairman of Rainbow Babies and Children's Hospital's Annual Golf Classic. He was also on the cabinet of United Way Services' 1996 Emerging Markets Group Fundraising Campaign, leading the middle market segment. In Grand Rapids, he was an active member of the Grand Rapids Art Museum and founded Arts Alive, a social organization for young people to support museum membership.

NEW MEMBERS

AS OF OCTOBER 6TH

Alex Berton
Edward Black
Nicole Testa
Daniyal Mufti

GIS 33RD ANNUAL

MANAGEMENT CONFERENCE

This **Thursday, October 14th** marks the beginning of the **GIS 33rd Annual Management Conference in London, Ontario**. This year's sponsoring chapter is the Alpha Rho Chapter at Fanshawe College. Various awards are presented at the conference each year and the Sigma Chapter is a promising contender for many of them. Look for a conference recap in next week's issue of *Risky Business*.



THE FOX SCHOOL
of Business and Management

TEMPLE UNIVERSITY



**MEET THE OFFICERS:
GEORGETTE RUSSELL**

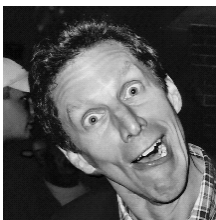
Georgette is currently the Director of Membership Development, and develops members she does. Georgette teaches through example—she’s always on time, wearing a smile, and toting an amazingly positive attitude. Anything you ever need to know about Gamma—you can find out from her. If you ever need to contact George, even just to ask her where she got those fabulous shoes she’s always wearing, you can email her at grussell@temple.edu.

**ACTUARIAL SCIENCE
MAJORS RECEPTION**

Friday, October 22nd is the **Actuarial Science Majors Reception** for first and second year students in the major. This is a great opportunity for new students to the major to mingle with other students and faculty. The reception will be located in the **Rhoads Room of the Diamond Club located in Mitten Hall from 2:30 to 5:00**. Please email Dr. Viswanathan to RSVP <ksubrama@temple.edu>.

RISKY QUOTES: DR. CATHER~RMI 329

“**Secret Sauce**” = The individual ratio calculations that a rating agency may use in order to differentiate itself from other rating agencies.



Laff House

Looking for something fun and exciting to do? Need a good laugh after all those RMI classes? Well then join GIS for a night of laughter and fun at the **Laff House** on South Street. Marc Theobald will be the featured comedian—he’s made appearances on BET’s Comic View, Last Comic Standing, Showtime at the Apollo, Comedy Central’s Premium Blend, and The Chapelle Show. The show is on **Saturday, October 23rd at 7PM**. Tickets are \$12 and can be purchased in the Gamma Office (no cash please) until **Wednesday, October 20th**.

IT’S YOUR FUTURE!

**PROFESSIONAL DEVELOPMENT UPDATE
ATTENTION SENIORS:**

♦The **Senior Career Reception** is less than two weeks away.

ATTENTION ACTUARIAL SCIENCE INTERNS:

- ♦The first **Intern Interview Workshop** is **Saturday, October 23rd (9-12 in Room TBD)**.
- ♦The first **Etiquette Workshop** is **Friday, November 5th (4:45-6—Room TBD)**.

ATTENTION BA 100 STUDENTS:

- ♦Follow all notices for Actuarial Science intern candidates.
- ♦The **BA 100 workshop** is on **Saturday, November 6th from 9-12 (Room TBD)**.

Monday	Tuesday	Wednesday	Thursday	Friday	Saturday
11	12	13	14	15	16
<u>Committee Meetings</u> —11:40—12:30		<u>Guest Lecturer: James Meathe of Palmer & Cay</u> —11:40—12:30 Walk Auditorium	<u>Gamma Iota Sigma 33rd Annual Management Conference</u>		
18	19	20	21	22	23
		<u>Guest Lecturer: Charlie Ledbetter of Marsh</u> —11:40—12:30 Walk Auditorium		<u>Interns Presentation</u> —11:40—12:30 SP 113 <u>Senior Career Reception</u> —1 to 6 Mitten Hall <u>Actuarial Science Majors Reception</u> —Mitten Hall 2:30 to 5PM	<u>Intern Interview Workshop</u> —9—11:30 Room TBD <u>Laff House Social</u> —7PM