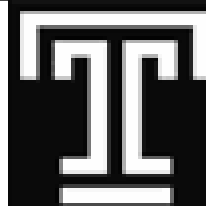




RISKY BUSINESS

MEMBER EDITION



**SIGMA
CHAPTER**

A NEWSLETTER FROM THE SIGMA CHAPTER OF GAMMA IOTA SIGMA
IN TEMPLE UNIVERSITY'S DEPARTMENT OF RISK, INSURANCE, AND
HEALTHCARE MANAGEMENT

**FOX
BUSINESS**

VOLUME X, ISSUE 9

[HTTP://WWW.TEMPLE.EDU/GIS](http://www.temple.edu/gis)

PHONE: 215.204.9368

OCTOBER 25, 2004

**JEFFREY KROHN, CPCU, CLU, CHFC, ARE
VICE PRESIDENT OF BUSINESS DEVELOPMENT**

GUY CARPENTER

WEDNESDAY, OCTOBER 27TH AT 11:40

WALK AUDITORIUM

Jeff Krohn is Vice President of Business Development in the Philadelphia office of Guy Carpenter & Company. He is responsible for generating new Life & Health reinsurance client relationships and has played an active role in shaping the actuarial modeling capabilities in the Life & Health Specialty Practice. Jeff is also actively engaged in helping companies quantify and manage their terrorism exposure.

Prior to joining Guy Carpenter, Jeff was a management consultant with PricewaterhouseCoopers in the Corporate Strategy Practice for the Insurance Industry Group. Jeff began his career in 1988 as a producer for Northwestern Mutual Life in Washington, DC. He received his MBA in Finance from Carnegie Mellon and a BA in Speech Communications and Mathematics from the University of Maryland.

IN THIS WEEK'S ISSUE...

- Current Events—
The Eliot Spitzer Trials
- RMI 100 Community Service
Events
- Designation Workshop—
Certified Employee Benefits
Specialist (CEBS)

NEW MEMBERS

AS OF OCTOBER 18TH

Lucas Dietrich

Akhil Deshpande

Nataliya Kolesnyk

Troy Wragg

Stefan Wilson

Bhakta Priya

Nicholas Davis

Nanda Priya

Colin Wilhelmson



THE FOX SCHOOL
of Business and Management

TEMPLE UNIVERSITY

CURRENT EVENTS:

THE ELIOT SPITZER TRIALS

COURTESY OF OUR INDUSTRY RELATIONS TEAM

New York Attorney General Eliot Spitzer is accusing fraud and violations of antitrust laws against Marsh & McLennan Companies, alleging the world's largest broker illegally steered clients to insurers paying the highest commissions and conspiring with insurers to rig quotes on client programs. The firm collected \$800 million in so-called contingent commissions in 2003 alone, investigators said. Some of the nation's largest insurance companies including American International Group, ACE Insurance Company of North America (based in Philadelphia), The Hartford, and Munich American Risk Partners are accused in Spitzer's suit of steering contracts and bid rigging. He said other insurance companies are being investigated. Mr. Spitzer also announced that two executives of American International Group have pled guilty to felony criminal charges related to the alleged schemes. The officials—who are with an excess insurance unit of AIG's American Home Assurance Co.—are cooperating with investigators, he said.

DESIGNATION WORKSHOP—CEBS

Next **Friday, November 5th**, will be our first **Designation Workshop** of the semester. This event will take place during the free period (**11:40 to 12:30**) in **Speakman Hall Room 113**. These workshops are excellent opportunities to learn about the various professional designations available to risk management and insurance professionals.

Dennis Mahoney of the International Foundation for Employee Benefit Plans will be here to discuss the **Certified Employee Benefits Specialist (CEBS)** designation.

Please stop by the Gamma Office to sign-up.

RMI 100 COMMUNITY SERVICE EVENTS

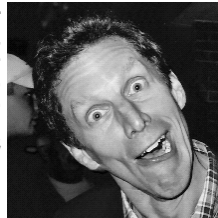
There are two events remaining to fulfill the community service requirement for RMI 100. The first is on **Saturday, November 6th** from **9 to 1**. This event will be coordinated with **Philadelphia Cares**, the same group that organizes Philadelphia Care Day. The deadline to sign up is **Friday, October 29th**. You can sign-up via email or through the sign-up sheets that will be provided at Monday's committee meetings.

The second event, "**Pie in the Sky**", is on **Saturday, November 13th** from **9 to 1**. This is an event coordinated with **MANNA** (An organization created to provide food and nourishment for people living with HIV/AIDS). Volunteers will be baking, wrapping, boxing, and packing pies. The deadline to sign up for this event is **Friday, November 5th**. Please sign-up via email or through the sign-up sheets that will be provided at Monday's committee meetings.

Email Sonja Williams <swilli1@temple.edu> or Sabrina Enam <senam@temple.edu> with questions.

RISKY QUOTES: DR. CATHER'S POST-CONFERENCE REFLECTION—

"EVERYBODY'S CONFUSED AFTER THAT LONG WEEKEND WE HAD. DO YOU REALIZE THAT I HAD TO RIDE ON A BUS FOR 22 HOURS WITH SOME OF YOU PEOPLE? I DON'T EVEN SEE MY WIFE THAT MUCH!"



| Monday | Tuesday | Wednesday | Thursday | Friday | Saturday |
|--|---|--|----------|---|--|
| 25 <u>Committee Meetings—</u> 11:40– 12:30 | 26 <u>Terror Behind the Walls—</u> 7PM | 27 <u>Guest Lecturer: Jeffrey Krohn of Guy Carpenter—</u> 11:40—12:30 Walk Auditorium <u>Kickball Tournament—</u> 6PM Pearson Hall 145 | 28 | 29 <u>Interns Presentation—</u> 11:40—12:30 SP 113 | 30 <u>Intern Interview Workshop—</u> 9—11:30 Location TBD |
| 1 | 2 | 3 <u>Guest Lecturer: Robert Myers of Morris, Manning, Martin—</u> 11:40—12:30 Walk Auditorium | 4 | 5 <u>Designation Workshop—</u> 11:40—12:30 SP 113 | 6 <u>BA 100 Workshop—</u> 9—11:30 Location TBD |
| | | | | <u>Etiquette Workshop—</u> 4:45-6 Location TBD | |