

# RISKY BUSINESS

TEMPLE UNIVERSITY, FOX SCHOOL OF BUSINESS, DEPARTMENT OF RISK, INSURANCE AND HEALTHCARE MANAGEMENT

## H. WAYNE SNIDER DISTINGUISHED GUEST LECTURER SERIES



**JOSEPH M. DiBELLA**  
EXECUTIVE VICE PRESIDENT  
CONNER STRONG  
CHERRY HILL, NJ

**WEDNESDAY,**  
**NOVEMBER 18TH 2009**  
ALTER HALL AUDITORIUM  
12:00PM - 12:50PM

Joseph DiBella is responsible for the overall management of the Employee Benefits Division of Conner Strong Companies, Inc. The benefits sales organization reports to him. DiBella also plays a continuing consulting role with key clients, engaged in all aspects of program design, installation and on-going administration/consultation of full service, complex benefit plans.

DiBella joined Conner Strong in 2005, with many years of senior leadership experience in the group benefits industry. Most recent to joining Conner Strong, DiBella spent three plus years as the Senior Leader/Managing Associate for National and Jumbo accounts at Horizon. He was responsible for over 350 group clients with revenues in excess of \$950 million annually. He man-

aged 18 healthcare professionals and personally directed, consulted for and worked with some of the nation's largest groups.

From 1991 to 2005, DiBella worked for NJ's largest health plan, Horizon Blue Cross Blue Shield of New Jersey. Early in his career he worked for the company's HMO subsidiary with responsibility over product development, network management, and related managed care functions. DiBella was then a National Account Manager for eight years, dealing with Fortune 50 clients and handling some of the largest group clients in the nation, including all of the organization's largest public sector accounts. He has significant experience in plan design, consulting, labor negotiations and all aspects of employee benefit and insurance management. He was a

winner for each year he was in the account management group and was Associate of the Year for three consecutive years.

Joseph holds his Bachelors of the Arts degree in Political Science from Seton Hall University

DiBella served as an elected member of his local Board of Education and an elected Township. From 2005 through 2008 he was elected Mayor of Howell Township, NJ, the state's largest municipality. He has also served as a member of the Board of Directors at Kimball Community Medical Center in Lakewood, NJ.



## IT'S THE SIGMA CHAPTER'S 29TH BIRTHDAY!

COME OUT TO CELEBRATE!

### Birthday Bowling

Tuesday, November 17th 2009  
Strikes Bowling Lounge  
7:00PM - 10:00PM



Bowling Night has been postponed to November 17th and is now an exciting part of Birthday Week! Birthday Bowling will be held at the Strike's Bowling Lounge, which is located on the campus of UPenn. This location is easily accessible through the subway system from Temple's campus. Besides bowling and pool tables, Strikes will offer a variety of delicious food as well as beverages. This event is open to EVERYONE, so bring your friends! The cost per person is \$15 and this includes appetizers. Payments are being collected in the Gamma Office. Contact Melissa Pane at [Melissa.pane@temple.edu](mailto:Melissa.pane@temple.edu)

### Birthday Cake

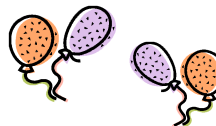
Friday, November 20th 2009  
Alter Hall Lobby

Get your **FREE** piece of birthday cake on Friday in the Alter Hall Lobby beginning at 11 am. After all, what better way is there to celebrate the birth of your favorite chapter of Gamma Iota Sigma than eating delicious cake?



### Birthday Party

Friday, November 20th 2009  
Mad River in Old City  
8:00PM - 11:00PM



**There's no party like a Sigma Chapter birthday party!** So come out for all the fun on Friday night in order to celebrate Sigma's 29th birthday! The party will be held at Mad River in Old City and is sure to be a blast.

Contact Melissa Pane at [Melissa.pane@temple.edu](mailto:Melissa.pane@temple.edu)



**Committee Meetings**

Monday, November 16th 2009  
12:00PM - 12:50PM

**Remember - Today, November 16th, is a Committee Meeting Monday! This is the second-to-last one of the semester!**

- Student Affairs - SAC 220
- Community Affairs - SAC 217A
- MIS Committee - Speakman Lab 27
- Public Relations - SAC 223
- Career Development - SAC 217C
- Math Competition - SAC 207
- Special Events - SAC 217B

**Philadelphia Chapter Chartered Property Casualty Underwriters (CPCU)**

Tuesday, November 17th 2009  
Union League in Philadelphia  
5:00PM - 7:00 PM

The Philadelphia Chapter of the Chartered Property Casualty Underwriter (CPCU) Society is holding their November Dinner Meeting at the Union League in Philadelphia. They have opened their doors to all interested Sigma Chapter members. The topic for this meeting is Cyber Insurance. Along with learning a great deal about this issue, you will also have the opportunity to network with the top Insurance Industry Professionals in the Philadelphia area!

Contact Jenna Gallo at gallo.jenna@gmail.com

**Brokers' Panel**

Friday, November 20th 2009  
Speakman 112  
12:00PM - 12:50PM

This workshop features current brokers from various companies detailing their experiences as full-time brokers, including the type of clients they interact with, why they became brokers, and any additional advice for students interested in becoming brokers.

Contact Luba Sakalova at lubas@temple.edu

**Being a Life and Health Actuary**

Friday, November 20th 2009  
Speakman 115  
12:00PM - 12:50PM

A guest speaker will detail what it is like to be a Life and Health Actuary, the upcoming trends that could affect the industry, as well as give advice for a successful career as an actuary in the Life and Health industry.

Contact Luba Sakalova at lubas@temple.edu

**Tree Planting Event**

Saturday, November 21st 2009  
South Philadelphia High School  
(Broad & Snyder)  
8:30AM - 12:00PM



**This is the last community service event for RMI 3682 being held this semester.** About 150 trees will be planted across the city during this service project and several organizations will be participating. Come out and help make Philadelphia a more beautiful place!

Contact Pratty @ prathamesh.nalawade@temple.edu

**Provisions of the Healthcare Overhaul Past by the House**

- Creates a new government health insurance plan that would be sold through the exchange.
- Bars insurers from excluding people for pre-existing conditions and from charging more based on medical history.
- Permits young people to remain on their parents' health insurance policy up to the age of 27.
- Sets up a state/federal process under which insurers would have to justify premium increases.
- Eliminates lifetime limits on coverage.
- Individuals are required to obtain healthcare coverage. Those who do not would face a 2.5 percent tax penalty.
- Most employers are required to provide coverage to their workers and pay for at least 72.5 percent of the premium for individual full-time workers, 65 percent for family coverage.
- Imposes a surtax of 5.4 percent on individuals earning more than \$500,000 a year and couples making more than \$1 million.
- Expands Medicaid eligibility so that anyone with an income up to 150% of the poverty level would qualify for the government healthcare program for the poor.

\*The Insurance Journal



November 7th 2009 Community Service Event

		5	2		6
		9			
3				4	2
	5		1	8	7
4					2
		9	6	4	8
	1	8			4
				9	
3			5	6	