

**SELECT  
UPCOMING  
EVENTS:**

3/6/13 -  
Dina Daniele  
Vice President of  
Marketing  
The Graham Company

3/20/13 -  
Amy Laverock  
Global Health and  
Benefits Strategic  
Solutions Leader  
Mercer

Join us every  
Wednesday in  
Alter Hall A031  
from 12-12:50PM!

**IMPORTANT  
DATES**

- 2/25 **Gamma  
e-Store Closes**
- 2/25 **Industry to**
- 2/26 **Campus Events**
- 2/27
- 2/28 **RMI Summer  
Intern  
Reception**
- 3/1 **RMI Intern  
Presentation  
Workshop**
- 3/1 **AS Exam  
Passers  
Roundtable**

Send your feedback  
concerning Risky Business to :  
tim.cornish@temple.edu

# Risky Business

VOLUME XXX, ISSUE V

FEBRUARY 25, 2013

**The H. Wayne Snider Distinguished Guest Lecturer Series presents:**

## **Adeola Adele**

**Senior Vice President, U.S. Employment Practices Liability  
Marsh, Inc.**

**Wednesday, February 27, 2013, Alter Hall 031 - 12-12:50PM**



Adeola I. Adele is a Senior Vice President and Product Leader for Marsh's Employment Practices Liability (EPL) Practice in FINPRO. In this role, Adeola is responsible for all of FINPRO's intellectual capital and content relating to the EPLI product, including Marsh's highly successful Global Leaders and Leaders Preferred Endorsements, EPL Risk Profile, Market Capacity charts and the Current Business and Legal Trends. In addition to training colleagues and keeping clients abreast of emerging legal and market trends, Adeola engages on large and complex EPL claim issues and works to strengthen our relationships with clients, prospects, markets, and centers of influence. Adeola is a frequent presenter on issues relating to employment law and EPLI. She is also the Co-Chair of Marsh's African Heritage Employee Resource Group.

Prior to joining Marsh in 2007, Adeola worked at two highly respected law firms: Kaufman, Borgeest & Ryan LLP and, most recently, Sedgwick, Detert, Moran & Arnold, LLP. While at these firms, Adeola defended coverage litigation against EPLI markets, provided coverage opinions, and investigated and monitored EPL claims. Additionally, Adeola is experienced in defending EPL litigation against private companies, non-profits and municipalities, as well as drafting employee handbooks and conducting anti-harassment training.

Adeola earned a Bachelors Degree in Administration of Justice from Howard University then went on to earn a Law Degree from Temple University School of Law. Adeola is a member of the American and New York Bar Associations and the Professional Liability Underwriting Society (PLUS). She is admitted to practice law in New York and the Eastern and Southern Districts of New York. She is on the editorial staff for the Temple Political & Civil Rights Law Review and is an Alumna of the Moot Court Honor Society.

## Risk Management & Insurance Summer Intern Reception

Thursday, February 28, 2013 - 1-6PM

Alter 7th Floor MBA Commons

On Thursday, February 28, 2013 from 1:00-5pm, the Sigma Chapter of Gamma Iota Sigma will hold its Risk Management & Insurance Summer Intern Reception in the MBA Commons of Alter Hall. Representatives from over 40 companies will be recruiting for summer internship positions in Risk Management & Insurance. All Summer Intern Candidates who have completed the steps in 'The Road to the Resume Book' will be eligible to attend.



### Industry to Campus Events

**Monday, February 25, 2013 - 5-7PM - Alter Hall 033**

*\*Trion - 5-6PM, Cigna - 6-7PM\**

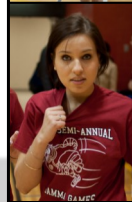
**Tuesday, February 26, 2013 - 5-7PM - Alter Hall 033**

*\*AIG - 5-6PM, Swiss Re - 6-7PM\**

**Wednesday, February 27, 2013 - 5-7PM - Alter Hall 033**

*\*Liberty Mutual - 5-6PM, Travelers - 6-7PM\**

Many questions come to mind when considering internships positions. Am I interested in being a broker or an underwriter? Property and casualty or employee benefits? Philadelphia or relocate? These sessions are a great opportunity to interact with companies that will be present at the upcoming RMI Intern Reception and discuss company initiatives, employment expectations, corporate culture and other information to help students make these decisions.



### Actuarial Science Friday Workshop

Friday, March 1, 2013, 12-12:50pm

Speakman 114

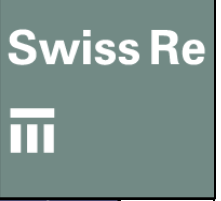
At the Exam Passers Round Table, Fellow students will discuss what it is like studying for Actuarial exams. Included topics will be methods of study, study materials used, guidance, tips, and tricks. The presentation will include going over resources that are available to maximize study efforts.



### RMI Friday Workshop

Friday, March 1, 2013, 12-12:50pm, Speakman 112

The "Intern Presentations" feature students' presentations on their summer internships. It is important to get the facts from a third party in addition to the company's information when considering that company's offer. Students will discuss their responsibilities as interns, the perks and drawbacks of the internship programs, and how they obtained their internships followed by an evaluation of their overall experience. There will also be plenty of time for the presenters to answer questions that members might have.



5		8	7					1
					4	3		
		7	1	3	9			8
4						2	3	5
	4							
			3	5				
3						9	8	
								4

RBD Warning: Sudoku is not intended to treat, cure or reduce in-class boredom. Please see your professor for side-effects of in-class use.  
**Use at your own risk!!**